



  
**Bukhari Tours**  
Travel With Confidence

**HAJJ**

**2025**

**PAKISTANI PASSPORT ONLY**

**Bukhari Tours**  
Travel With Confidence



# HAJJ 2025

PAKISTANI PASSPORT ONLY  
ECONOMY PACKAGE



FROM

**£ 6700**

CAMP B - ZONE 2

Dep. 26 May Manchester to Jeddah  
Ret. 16 Jun Madina to Manchester

📍 618A Stockport Road, Manchester M13 ORQ 🌐 [www.bukharitours.co.uk](http://www.bukharitours.co.uk)

Call Us: 161 985 9898

Whatsapp : +44 7513 311939, Call Center: 161 985 9898

SHARING  
(6 BEDS)

£ 6700

SHARING  
(5 BEDS)

£ 6900

SHARING  
QUAD

£ 7100

TRIPLE  
ROOM

£ 7700

DOUBLE  
ROOM

£ 8500

### Includes

Camp B Zone 2, Ziarat Makkah and Madina Quebani, Full Board Food, Air Conditioned Buses Medical Insurance in KSA, Hajj Visa, Hajj Draft  
Not Included: Travel Insurance, No Hidden Charges

### Requirements

8 Months Valid Passport, One Photograph Valid Nadra Card (front and back), Meningitis Vaccine Certificate, (not older the 3 years), Blood Group Nominee ID Card and Phone number

### Hajj Programe

Step by Step Guidance, Makkah to Mina 3 Jun (7 Zulhaj)  
Mina to Arafat 5 Jun (9 Zulhaj), Arafat to Mudhalifa 5 Jun after Maghrib  
Mudhalifa to Camp 6 Jun After Fajar, First Rummy 6 June after Qurbani  
Tawaf-e- Ziarat 6 Jun, 10 Zulhaj after Rummy, 3 Jamarat Rummy 7 Jun  
3 Jamarat Rummy 8 Jun, , Mina to Makkah hotel 8 Jun (Hajj Completed)  
Makkah to Madina 10 Jun (Depending on Approval of Ministry of Hajj)

# MAKKAH HOTEL

## WARDH AL SALAH (AJYAD)

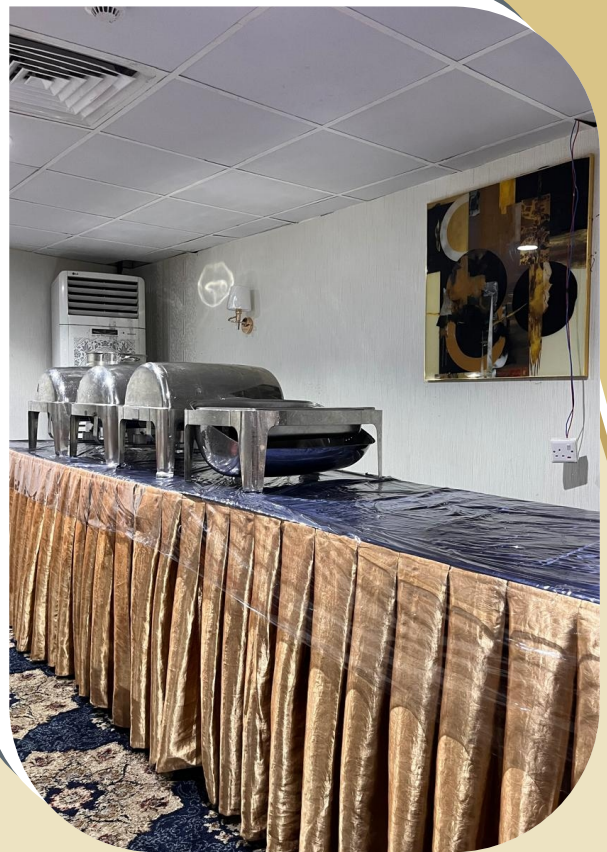
700 Meter from Haram



# MAKKAH HOTEL

## WARDH AL SALAH (AJYAD)

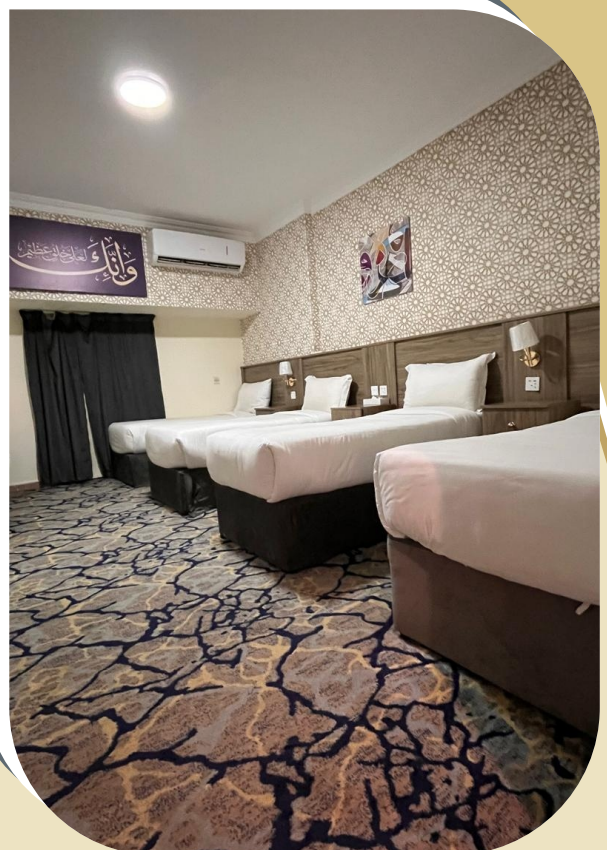
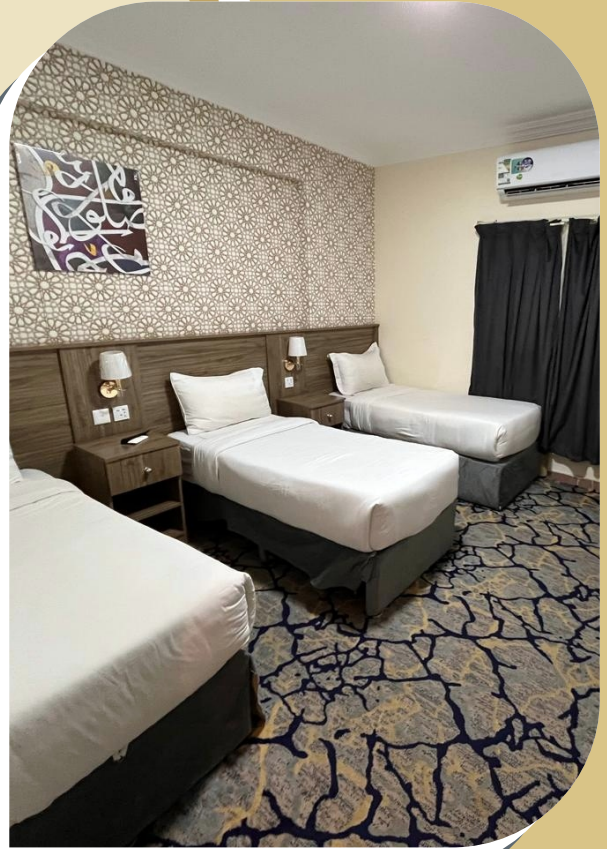
700 Meter from Haram



# MAKKAH HOTEL

## WARDH AL SALAH (AJYAD)

700 Meter from Haram



# MAKKAH HOTEL

## WARDH AL SALAH (AJYAD)

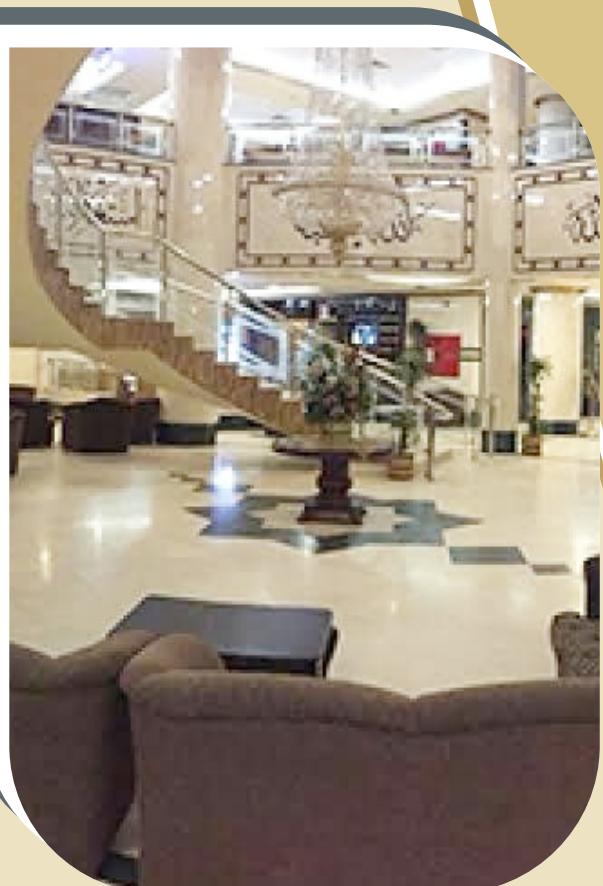
700 Meter from Haram



# MADINA HOTEL

## Jawahrat Al Rasheed

(250 meter from Masjid Nabwi)





# MADINA HOTEL

## Jawahrat Al Rasheed

(250 meter from Masjid Nabwi)



# INFORMATION

Bukhari Travel Limited, an honoured member of the IATA , ATOL, and the Ministry of Hajj, is a trusted travel agency with a 55 Years in Pakistan and 14 years in the UK.

Based in the UK, Our experienced professionals and dedicated to ensuring a smooth Hajj experience, with a reputation for reliability, customer Service, and professionalism, we have served over 20000 pilgrims offering seamless journeys. We excel understanding hajj and umrah pilgrims unique needs with expertise in transportation, accommodation, visa processing, tourism guidance, ziarat tours.

## **Possible difficulties encountered in Hajj**

Hajj is a pilgrimage that is performed by about 2.5 million people every year, Hajj is a difficult process which is very difficult and different from Umrah, Rather, it can be said that Umrah is one of the many parts of Hajj.

Hajj is five days of continuous and tiring work, that is why Allah Almighty has reserved only Paradise as reward for Hajj.

In Hajj, 2.5 million people travel from Makkah to Mina , then Mina to Arafat , then Arafat to Mudalifa, then Mudalifa to Mina then Mina to Jamarat (Shaitan) then Jamarat to Haram then Haram to Mina in four to six hours on every single movement.

Due to rush in Hajj, delay in transport is a very normal process, All institutions and companies are bound by the schedules given by the Ministry of Hajj, but delays due to heavy rush are a very normal process.

As of 2020, there is no fixed location in Mozlifa and no regular parking for buses, due to which buses sometimes depart from there and every one has to walk to the camp from Mozlifa.

The taste of food in Makkah and Madinah may differ, Food in hotels is delivered by vehicles, sometimes the food delivery vehicles are delayed due to traffic.